

Interface board for B2413-B2414 & B2415

B2416

Table of contents

- Sheet 1: Project overview (this page)
- Sheet 2: Interface_Board_for B2413-B2414 & B2416

U_Top
B2416.SchDoc

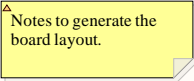


Legend

General comment such as function title, configuration, ...

Text to be added to silkscreen.

Warning text.



OPEN PLATFORM LICENSE AGREEMENT

The Open Platform License Agreement (“Agreement”) is a binding legal contract between you (“You”) and STMicroelectronics International N.V. (“ST”), a company incorporated under the laws of the Netherlands acting for the purpose of this Agreement through its Swiss branch 39, Chemin du Champ des Filles, 1228 Plan-les-Ouates, Geneva, Switzerland.

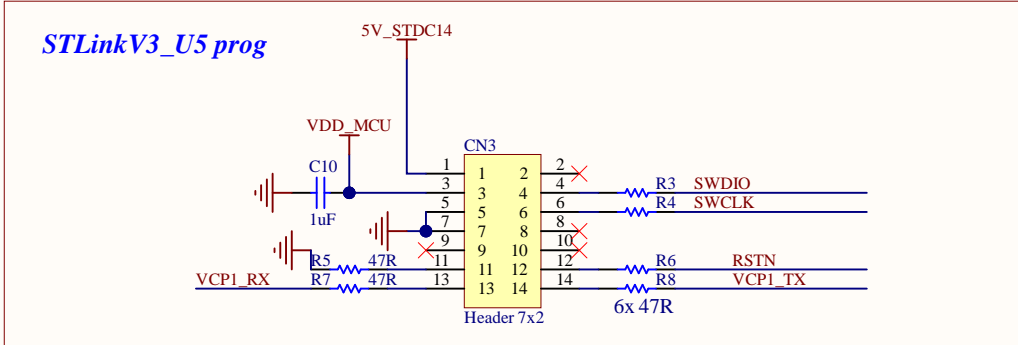
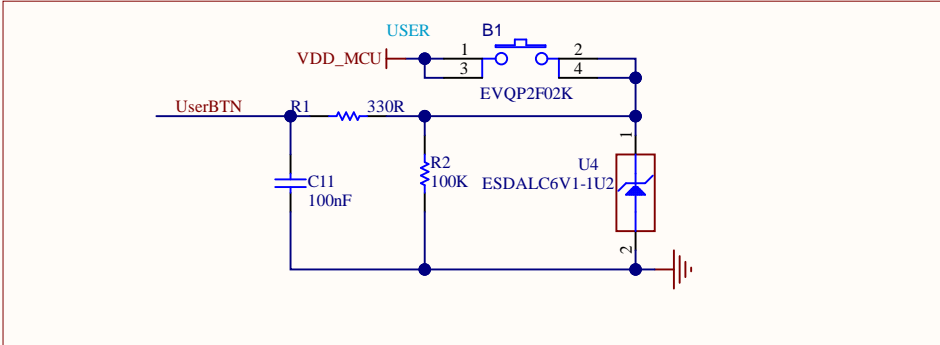
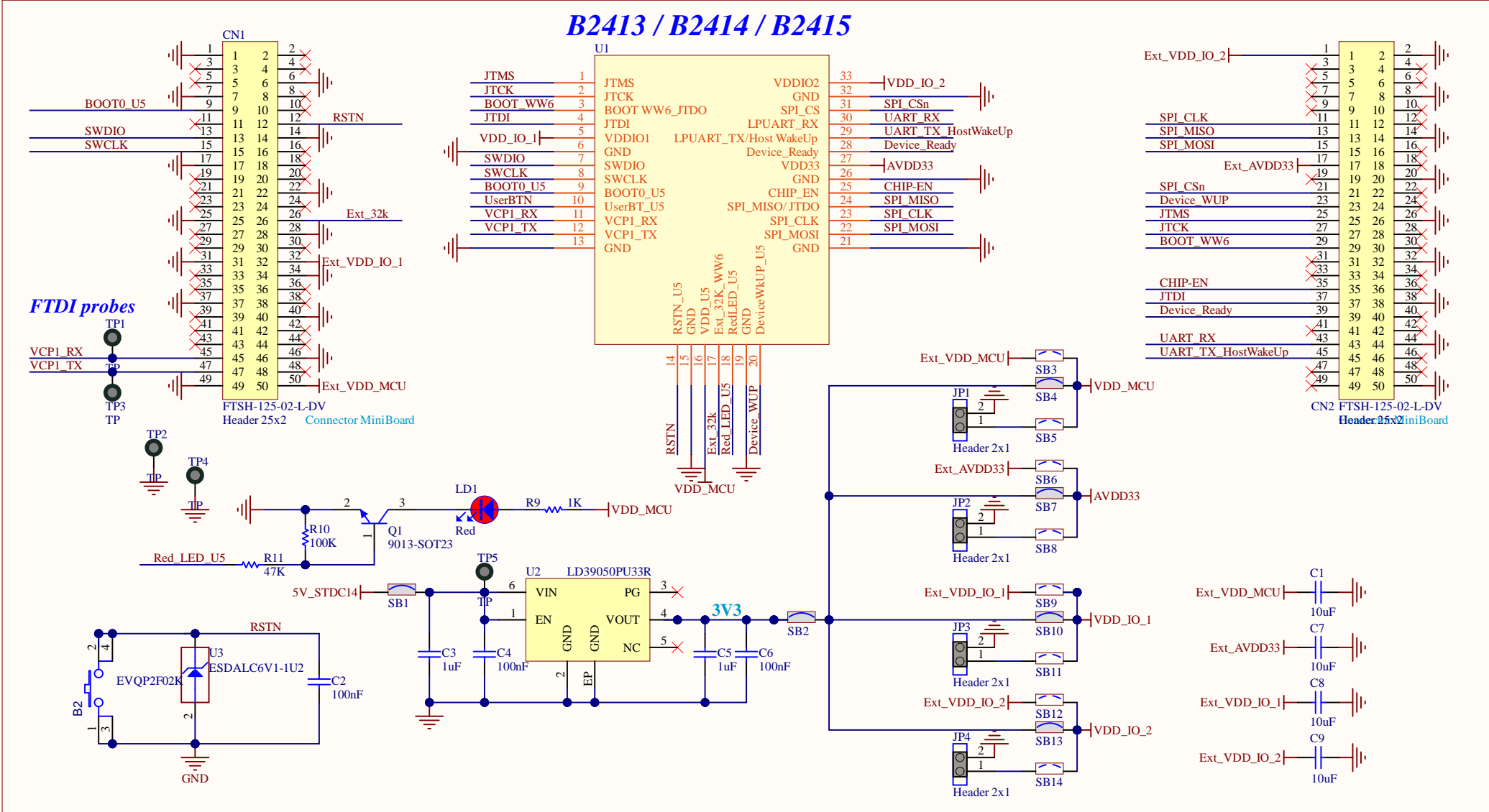
By using the enclosed reference designs, schematics, PC board layouts, and documentation, in hardcopy or CAD tool file format (collectively, the “Reference Material”), You are agreeing to be bound by the terms and conditions of this Agreement. Do not use the Reference Material until You have read and agreed to this Agreement terms and conditions. The use of the Reference Material automatically implies the acceptance of the Agreement terms and conditions.

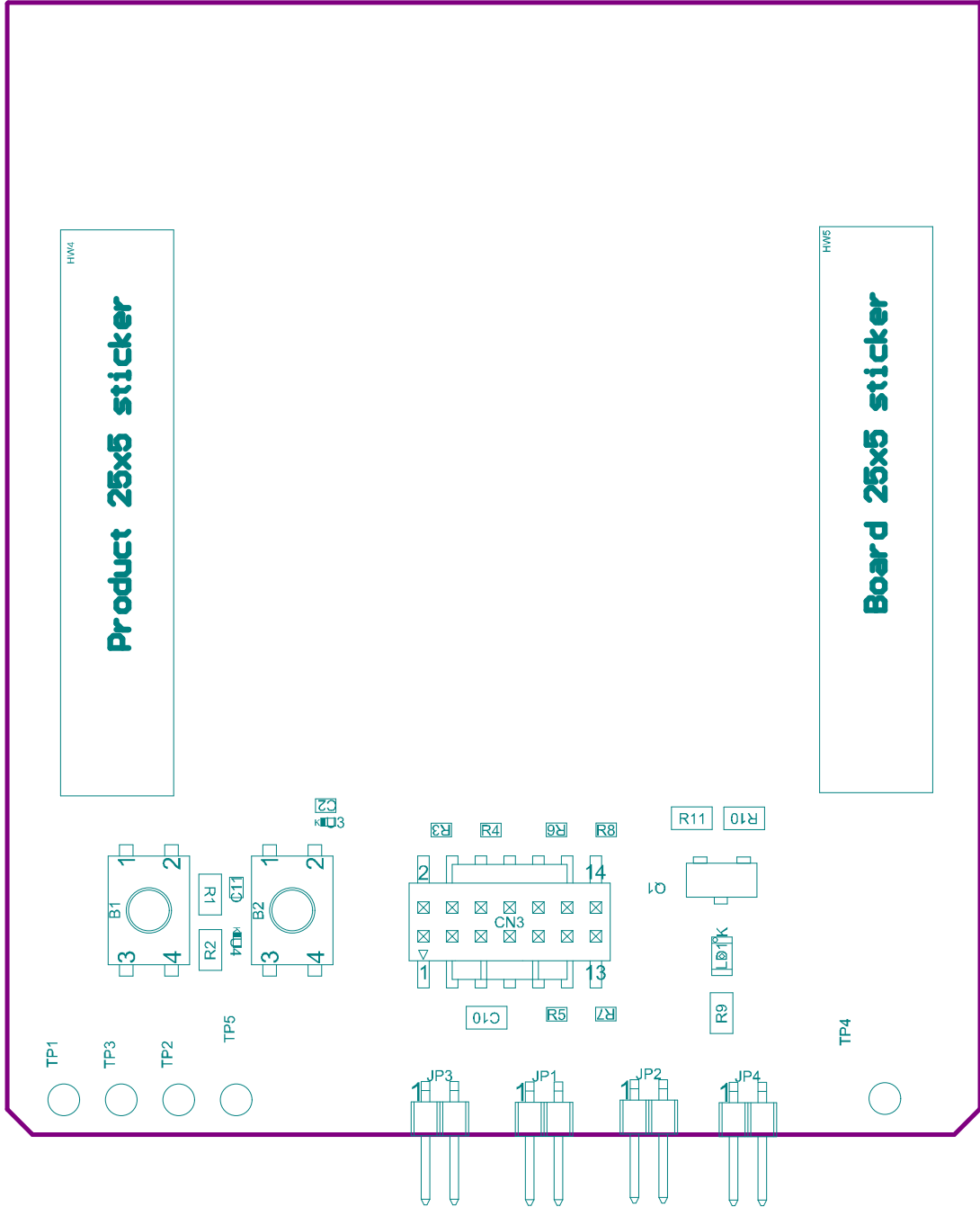
The complete Open Platform License Agreement can be found on www.st.com/opla.

Title: Project overview		
Project: Interface board for B2413-B2414 & B2415		
Variant: [No Variations]		
Revision: A-		Reference: B2416
Size: A4	Date: December 2024	Sheet: 1 of 2



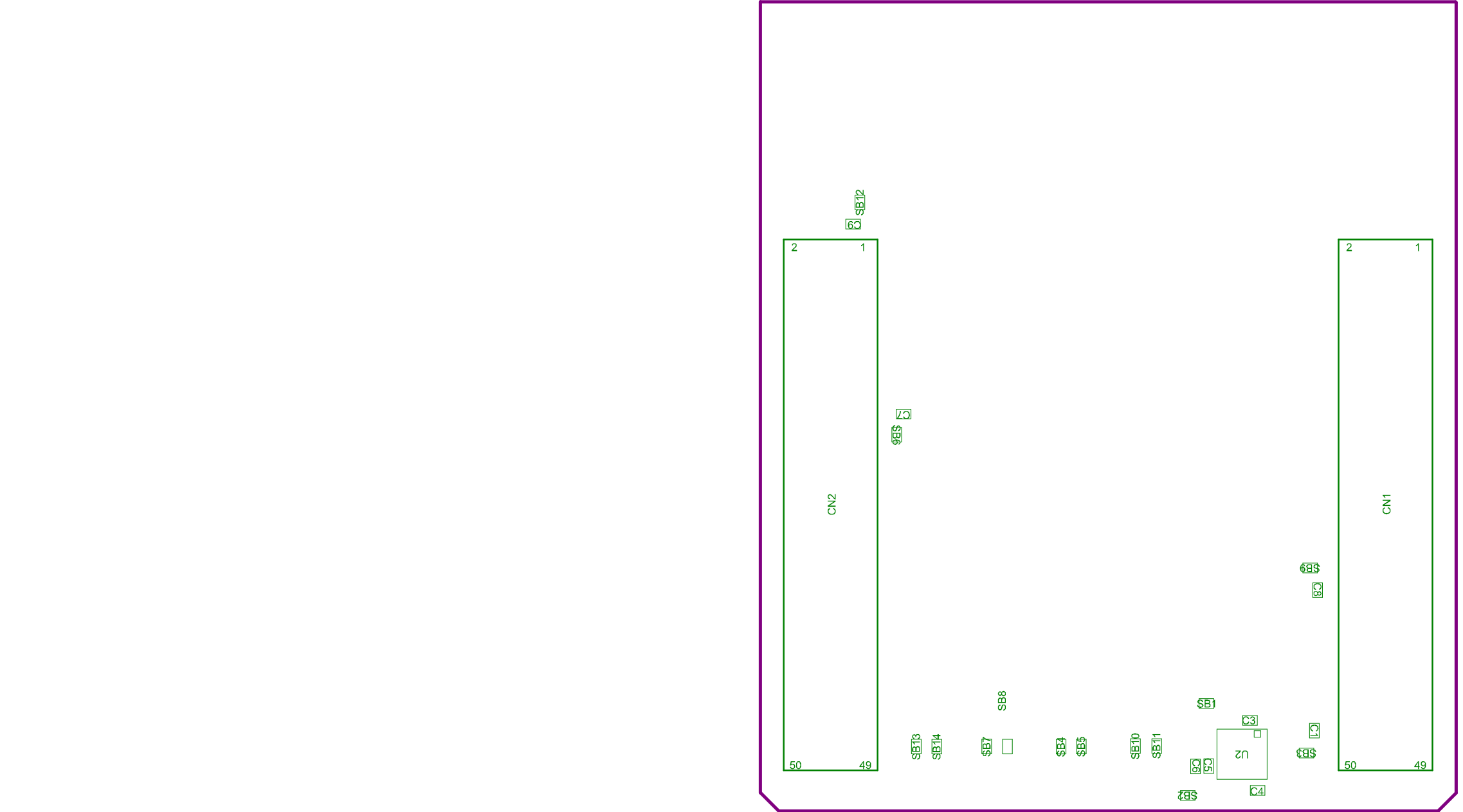
B2416: Mini Board Interface Board for ST67W611M1A + STM32U575






Project: Interface board for B2413-B2414 & B2415	
Layer: M14-Top Assembly	Gerber: .GM14
Variant: [No Variations]	Ref: B2416
Date: December 2024	Rev: A

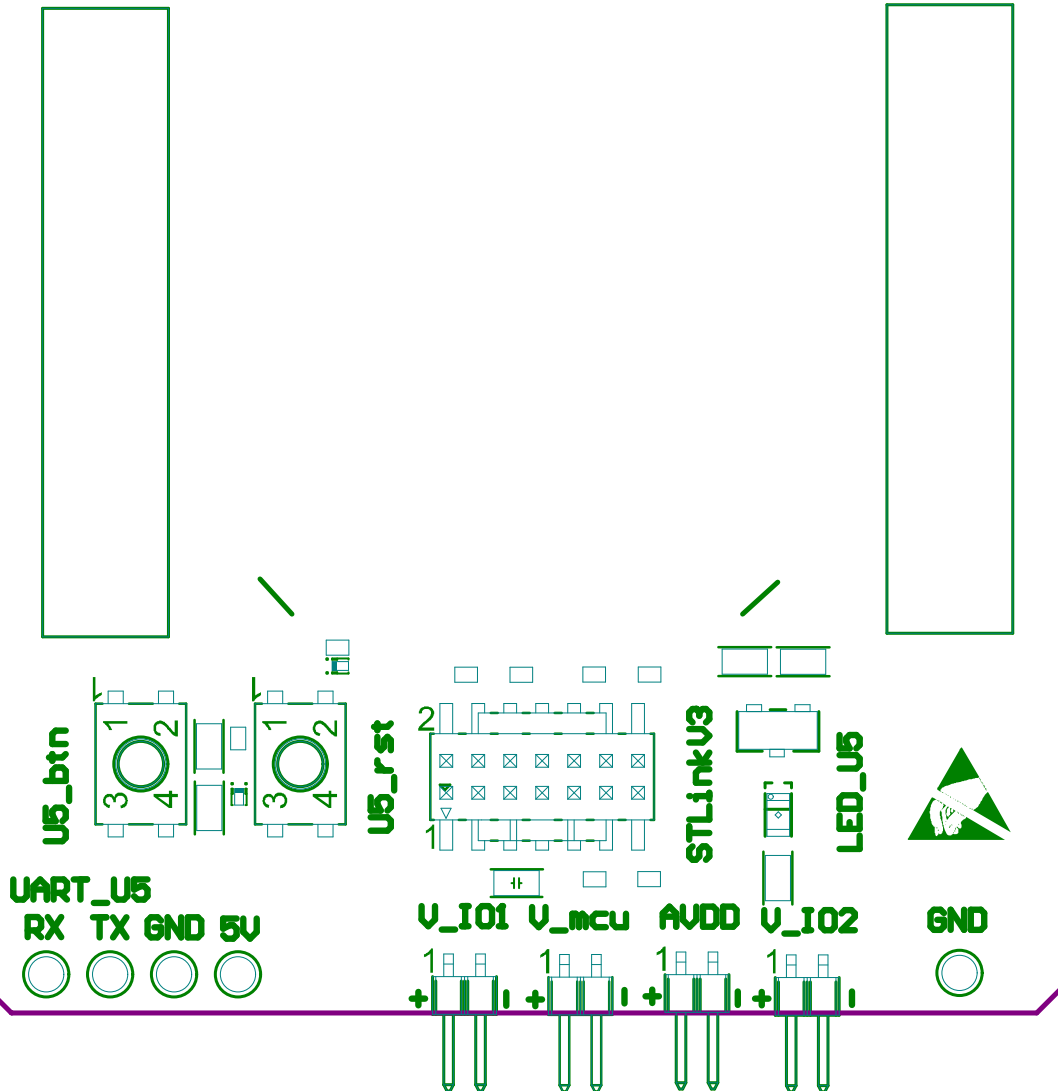




Project: Interface board for B2413-B2414 & B2415		
Layer: M15-Bottom Assembly	Gerber: .GM15	
Variant: [No Variations]	Ref: B2416	
Date: December 2024	Rev: A	



B2416



Top Overlay

.GTO

